

Issue 8 January 2008

visit [www.jpff.org.uk](http://www.jpff.org.uk)

## Happy New Year!

2008 will be a busy year at the Japan Foundation. You will be able to find updated information on the latest news and events from our website and e-bulletin. Find out more about some of our events starting in February below.

Scroll down the page to find out more about **Tokyo Notes - drama reading at the Japan Foundation**, the **Third Japanese Speech Contest for University Students**, the **World Heritage Exhibition at RHS Wisley** and much, much more.

### Arts & Culture



#### Tokyo Notes - Drama Reading of Oriza Hirata's Play at the Japan Foundation

The Japan Foundation presents a reading of celebrated playwright **Oriza Hirata's** play *Tokyo Notes* on 9 February from 2.30pm.

For more information, [click here](#).

(Image: Oriza Hirata photo: T Aoki)

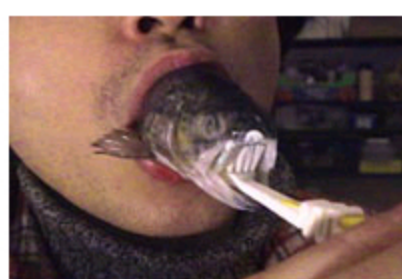
#### A Life More Ordinary - Film Touring Programme returns

The Japan Foundation annual film touring programme returns throughout February and March in venues across the country with its programme entitled *A Life More Ordinary: A Portrait of Contemporary Japanese People on Film*.



For more information, [click here](#).

(Image: Kamikaze Girls Dir: Tetsuya Nakashima 2004/ 103 min/ subtitled)



#### Laughing in a Foreign Language at the Hayward Gallery

A major exhibition at the Hayward Gallery exploring the role of laughter and humour in contemporary art including the work of 3 artists from Japan.

(Image: Taiyo Kimura: Typical Japanese - English (2005) photo: Mfe Morimoto)

For more information, [click here](#).

### Language (JFLLC)

#### Japanese Speech Contest for University Students

The finals for this year's University Speech Contest will be held on Saturday 2nd February. Anyone is welcome to attend!

For more information, [click here](#).



#### Find out how your school can start Japanese

Calling all senior managers, heads of MFL, primary language coordinators and LA language advisors interested in introducing Japanese! Sign up now for our free 2008 Head Start course on Tuesday 4th March.

For further information and an application form, [click here](#).

#### Apply now for February's CHIKARA Workshop



On 6th February we will be holding a one-day workshop for teachers on using the CHIKARA resources to teach GCSE Japanese.

For more information and to apply, [click here](#).

### Japanese Studies & Intellectual Exchange



#### Japan Foundation World Heritage Exhibition goes to RHS Wisley!

RHS Wisley held an exhibition of the Japan Foundation World Heritage panels throughout November as part of their *Elements of Japan* month.

For more information, [click here](#) to find out more about how you can borrow the panels.

JF news UK has been sent to you because you have either signed up to receive it, or shown an interest in Japan Foundation activities. If you prefer not to receive it, please follow the link below to remove your details from our e-bulletin list.

### Japan Foundation Funding

For full details of all our funding programmes click on the following links:

For Arts & Culture and Japanese Studies & Intellectual Exchange Programmes

For Language Programmes

### Japan Foundation Events in the UK

A full list of all events in the UK organised by, or with support from the Japan Foundation can be found on our website:

### What's On

forward this email to a friend

forward

#### THE JAPAN FOUNDATION

Russell Square House  
10-12 Russell Square  
London WC1B 5EH

Email  
[info@jpf.org.uk](mailto:info@jpf.org.uk)

Telephone  
020 7438 6695

Fax  
020 7323 4888

Enquiries for The Japan Foundation London Language Centre (JFLLC):

Email  
[info.language@jpf.org.uk](mailto:info.language@jpf.org.uk)

Telephone  
020 7438 6698

Fax  
020 7323 4888